

CONSTRUCTION NOTES

Begin by carefully cutting the top and bottom longerons from the printed wood sheet. Pin the longerons down in their respective places over shaded portion of plan. Cement connecting 1/8" sq. strips in place as shown. When dry, remove this unit from plan.

Cement the formers to the longeron frame, lining them up with the marks on longerons. Refer to plan for arrangement. Do not use excessive amounts of cement at this stage of assembly so the formers will not be warped and thrown out of line.

Stringers are cemented into notches next. Do this in pairs—one on each side—to keep the fuselage from springing out of line. When stringers are all in place, cement wing base in its respective position.

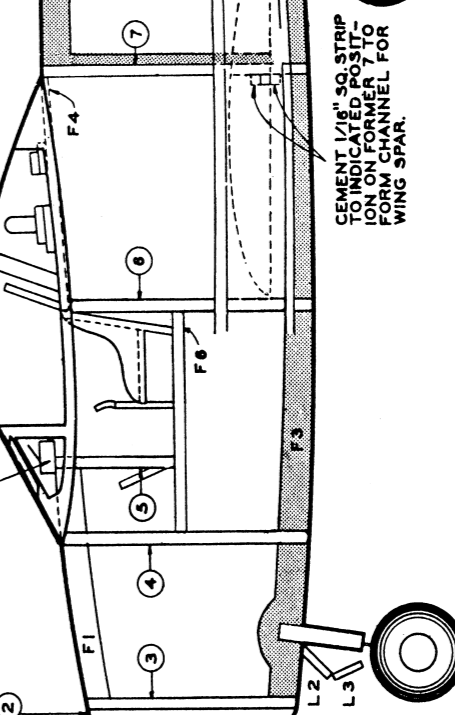
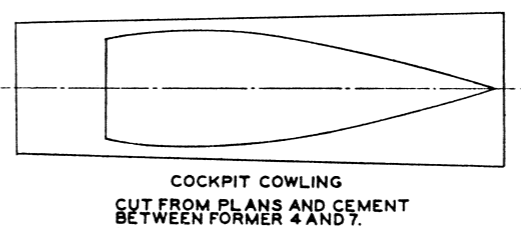
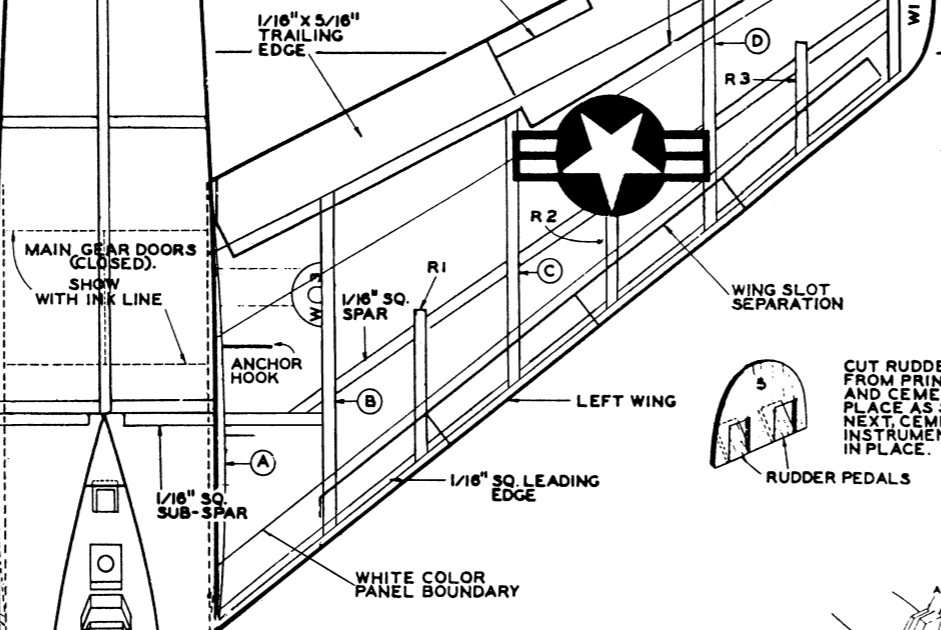
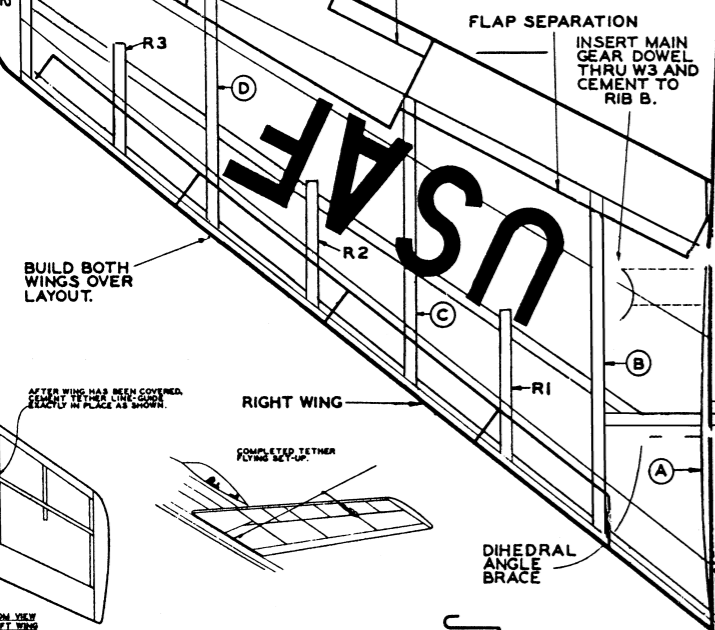
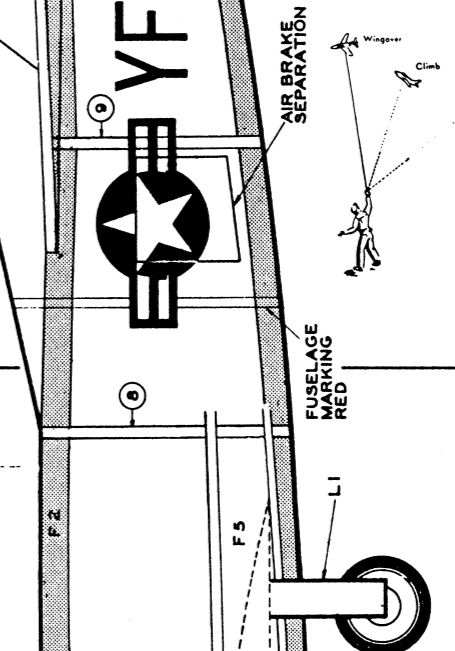
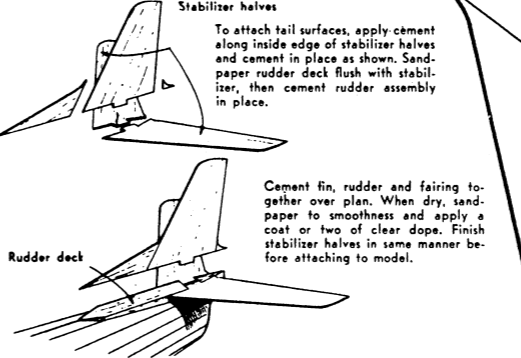
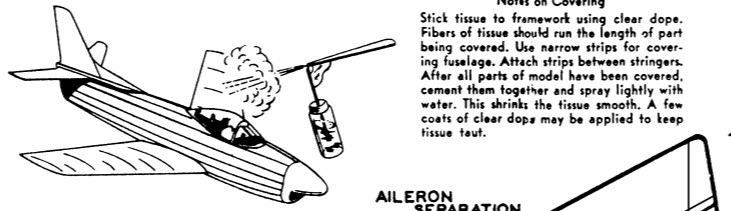
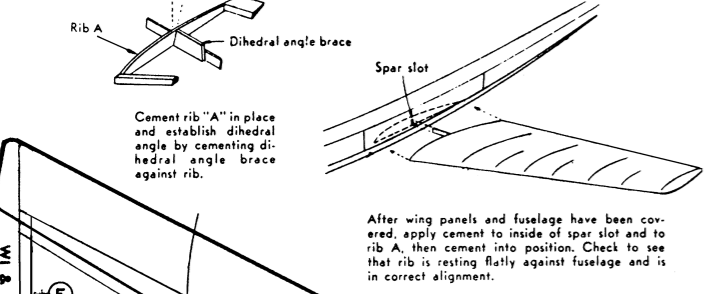
Notes on Covering
Stick tissue to framework using clear dope. Fibers of tissue should run the length of part being covered. Use narrow strips for covering fuselage. Attach strips between stringers. After all parts of model have been covered, cement them together and spray lightly with water. This shrinks the tissue smooth. A few coats of clear dope may be applied to keep tissue taut.

Stabilizer halves
To attach tail surfaces, apply cement along inside edge of stabilizer halves and cement in place as shown. Sandpaper rudder deck flush with stabilizer, then cement rudder assembly in place.

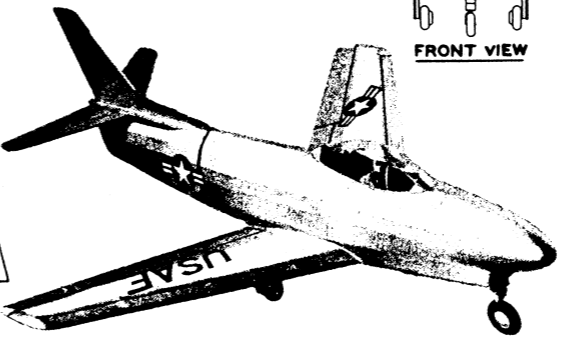
Cement fin, rudder and fairing together over plan. When dry, sandpaper to smoothness and apply a coat or two of clear dope. Finish stabilizer halves in same manner before attaching to model.

Build wing directly over shaded portion of plan. A piece of wax paper may be used over plan to prevent cement from sticking to it. Start by pinning down leading edge, trailing edge and spar. Then cement wing tips in place.

Tether Flying
Be sure that the tether line guide hook and anchor hook are made to size shown on plan and are securely fastened to the model. These must be placed in their required positions to give the model its proper balance in flight.
Fishing line or string may be used for the tether line and must be secured to a pole about five to ten feet in length. While learning to get the "feel" of the model it is best that you use one pole length of line. With a little practice you can climb or dive the plane by raising or lowering the pole. Use a longer line to step up the fun when you have become familiar with the model.
Take-offs can be made by shortening the line and paying it out when the model is in the air. Landings will require a smooth surface. While flying, always remember that the model will tend to follow the tip of the pole.



USAF 
YF-578 **YF-578**
  
CUT NUMBERS AND INSIGNIA FROM PLAN AND ATTACH TO MODEL.



F-86D SABRE
WINGSPAN 8 3/4 INCHES LENGTH 10 1/8 INCHES
KIT NO. E2 DRAWN BY *Frank Chmura*
DESIGNED BY *John Zauraki*