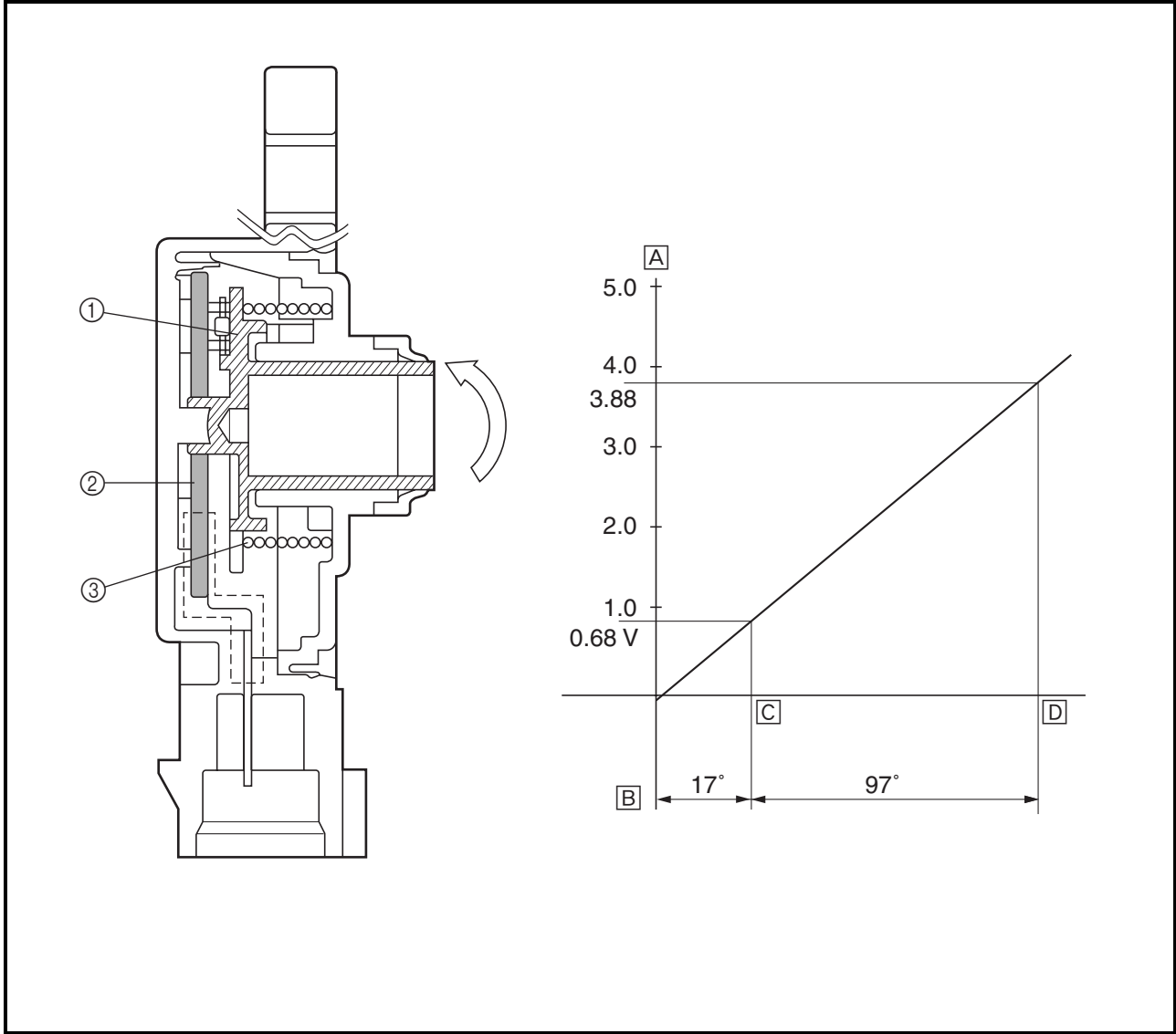


Throttle position sensor

The throttle position sensor measures the intake air volume by detecting the position of the throttle valve. It detects the mechanical angle of the throttle valve through the positional relationship between the moving contact that moves in unison with the throttle shaft and the resistor board. In actual operation, the ECU supplies 5 V power to both ends of the resistor board and the voltage that is output by the throttle position sensor is used to determine the angle of the throttle valve.



- ① Moving contact
- ② Resistor board
- ③ Spring

- Ⓐ Output voltage
- Ⓑ Idling output position
- Ⓒ Full close
- Ⓓ Full open