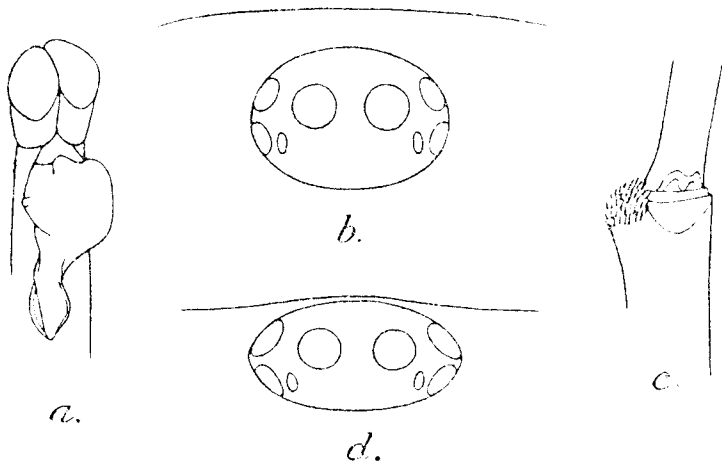


THE MALE OF *ORNITHOCTONUS MINAX* (THORELL).

By F. H. GRAVELY, D.Sc., Superintendent, Government Museum, Madras.

In my "Notes on Indian Mygalomorph Spiders" Nos. 1 and 2 (*Rec. Ind. Mus.* XI, pp. 257-287, pl. xv and XXXVII, pp. 69-84, text-figs. 1-3) I suggested that Pocock's two genera *Ornithoctonus* and *Melopoecus* were probably identical with Simon's genus *Cyriopagopus* and should be merged in it (see pp. 280-282 and 81-82 of the respective papers). My grounds for this were that the undescribed male of *Melopoecus*, of which I had collected a specimen for the Zoological Survey of India between Thingannyinaung and the base of the Dawna Hills in the Amherst District of Tenasserim, had the carapace low as in *Cyriopagopus*, and that I could find no satisfactory distinction between *Ornithoctonus* and *Melopoecus*. At the actual time of writing the first paper, the specimen was on loan and could not be re-examined. Since the writing of the second paper, however, it has been returned with the palp and first two legs of the right side missing. On comparing it with the type of *Cyriopagopus paganus*, Simon's genotype, which is also in the collection of the Zoological Survey, I find that although the height of the carapace resembles that of *Cyriopagopus*, the ocular tubercle differs (as does also that of the female) in being set well behind the front margin of the carapace instead of close behind, and in being about twice as wide as long instead of a little more—characters in which



Ornithoctonax minax (Thorell).

a. male palpal organ; b. eyes; and c. junction of tibia and tarsus of first leg.

Cyriopagopus paganus Simon.

d. eyes of type-specimen.

Melopoecus resembles *Ornithoctonus*. The type, which is I believe the only known specimen, of *Cyriopagopus paganus* is almost certainly

immature, but it seems unlikely that these are immature characters, especially as they appear to be found also in *Omothymus* Thorell (see Simon, *Histoire Naturelle des Araignees*, I, pp. 155-156) described from a mature male, a genus which Pocock regards, doubtless correctly, as a synonym of *Cyriopagopus*.

The genera *Ornithoctonus* (including *Melopocus*) and *Cyriopagopus* (including *Omothymus*) may, therefore, both be retained, being distinguished from one another by the position of the ocular tubercle, but not by the degree of elevation of the carapace.

The male specimen of *Ornithoctonus minax* may be described as follows:—Total length 35 mm., carapace 18×16 mm. Colour dark brown. Thoracic fovea transverse, not procurved as in female. Stridulating organ much as in female, but with spines on coxa of palp somewhat less stoutly dentiform. Palpal organ as in fig. 1a, tibial apophysis of first leg as in fig. 1c. Legs in the order 1, 4, 2, 3, femur of first pair about equal to carapace in length, patella and tibia of second pair a little longer and those of third pair a little shorter than carapace.