

[FROM TRANSACTIONS OF THE CONNECTICUT ACADEMY OF ARTS AND SCIENCES,
Vol. 36, July, 1945, Pages 169-175]

SOME INTERESTING NEW BRAZILIAN SPIDERS

CANDIDO DE MELLO-LEITÃO

Museum of Natural History, Rio de Janeiro

URUCHUS CRISTATUS n. sp.

♀ — 20 mm.

Legs	Femur	Patella-tibia	Protarsus	Tarsus	Total
I	9.0	12.4	7.2	6.0	34.6 mm.
II	9.0	12.4	7.2	6.0	34.6 mm.
III	8.4	10.0	7.6	5.2	30.6 mm.
IV	10.6	12.0	10.8	6.8	40.2 mm.

Carapace low; thoracic groove strongly recurved. *Eye tubercle* transversely oval, twice wider than long. Posterior row of eyes recurved; PME contiguous to PLE. Anterior row of eyes strongly procurved, the eyes separated by a little less than their diameter. ALE larger than PLE. Laterals separated by one-half of their diameter. *Clypeus* one-half of the diameter of AME. *Chelicerae* powerful; promargin with 11 equal teeth. *Lip* clearly set off from sternum, longer than wide, without cuspules. *Maxillae* with upper inner angle considerably produced and the base with 17 to 20 cuspules. *Sternum* with three pairs of sigilla, separated from the edge by their length. *Legs* 4, 1-2, 3. All tarsi flexuous, pseudo-segmented. Upper claws with two files of teeth. All tarsi scopulate to base and bisected by a wide band of black bristles. Tibiae I and II with two apical ventral spines and 0-0-0-1-0 lateral; protarsi with 1-0-1-0-1 proventral, 0-1-0-0-1 retroventral and 0-1-0-0-0 prolateral spines. Tibia III with 1-0-0-1-0 retroventral, 0-0-0-0-1 proventral and two apical lateral spines; protarsus with 1-1-0-1-1 retroventral, 0-1-0-1-0 proventral and 0-1-0-0-1 lateral spines. Anterior spinnerets separated by four times their diameter; posterior spinnerets with three articles; the basal and the second of the same length and shorter than the apical segment.

Carapace greenish-brown, with irradiating stripes mahogany brown. *Chelicerae* dark mahogany brown. *Tarsi* dark brown.



Sternum, lip and maxillae light mahogany, the sternum with a margin sulphureous yellow. Abdomen blackish chestnut, with six pairs of oblique light stripes; sides minutely spotted in light mahogany brown; ventral face marbled in dark and light chestnut.

Type locality—Minas Gerais, Brazil.

AVICULARIA PALMICOLA n. sp.

♀ — 30 mm.

Legs	Femur	Patella	Tibia	Protarsus	Tarsus	Total
I	10.7	5.6	8.0	7.6	5.0	36.3 mm.
II	10.0	5.0	6.8	6.8	4.8	33.4 mm.
III	8.0	4.6	6.0	6.2	4.2	29.0 mm.
IV	10.0	5.0	8.4	8.0	4.6	35.6 mm.

Cephalothorax low, with thoracic groove transverse, straight. *Eye tubercle* low, transversely elliptic, wider than long in ratio 3:2. Posterior row of eyes almost straight, PME elliptic, contiguous to PLE. Anterior row strongly procurved, AME smaller than ALE. ALE larger than PLE and separated from them by half the diameter. Anterior margin of carapace fringed with brown bristles. *Chelicerae* moderately long; promargin with a row of 8 teeth, of which the second proximal is quite small. Both margins with well-developed pinkish scopula. *Lip* almost twice wider than long, with four rows of cuspules in its distal half. *Sternum* with submarginal sigilla. *Legs* distinctly hairy; spines wanting on all legs and palpi. Scopulae on all tarsi and protarsi. The scopulae of the tarsi I and II very heavy, giving to the four anterior legs the appearance of being swollen considerably.

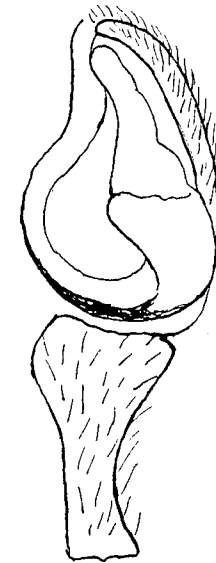
Carapace with reddish tegument and densely clothed with woolly ash-yellowish hair. Eye tubercle dark mahogany brown. Chelicerae blackish mahogany brown. Coxae black with a fringe of pink hairs. Sternum and median three-quarters of ventral face of the abdomen black; spinnerets black. Legs black below; scopulae tawny, iridescent; above with two longitudinal bands of reddish tegument, clothed with whitish hair, on all femora, patellae and tibiae; protarsi with apical fringe of short pink hairs. Abdomen brown, clothed with long orange-yellow hair and with a narrow blackish median band.

Type locality—Munhãba, Paraiba do Norte—Brazil.

RHOMPHAEA PETRUNKEVITCHI n. sp. (Textfigure 1)

♂ — 4.2 mm.

Legs	Femur	Patella-tibia	Protarsus	Tarsus	Total
I	4.4	4.0	2.4	1.0	11.8 mm.
II	2.4	2.0	1.6	0.9	6.9 mm.
III	1.2	1.1	0.8	0.5	3.6 mm.
IV	3.0	2.0	1.8	0.7	7.5 mm.



TEXTFIGURE 1

Cephalothorax flat, with wide transverse thoracic groove; cephalic region elevated in a very strong horn, curved forwards and armed above with two spines, directed forwards. Posterior row of eyes straight, PME separated by three times their diameter and subcontiguous to PLE. Anterior row of eyes slightly procurved, AME larger than ALE, separated by twice their diameter and subcontiguous to ALE. PLE contiguous to ALE. *Clypeus* high, almost vertical, higher than the quadrangle of median eyes. *Abdomen* cylindrical, with a caudal process elevated and curved, almost as long as the anterior region.

Carapace pale olive yellow with darkish margin and three lines behind posterior eyes forming a W with two short processes;

cephalic horn pitch brown. Clypeus with two longitudinal bands black, which continue themselves on the basal half of the chelicerae. Lip and maxillae pale yellow. Sternum black with a median narrow band pale yellow. Abdomen pale olive yellow, above with scattered silver spots and with an anterior X and two V's in the posterior half; below with the epigastric region dark brown and with a large black O between the spinnerets and the pulmonar slits; behind the spinnerets a black A.

Type locality—Jaraguá, Goiás—Brazil.

Type: No. E 330.

SCOLODERUS SOARESI n. sp. (Textfigure 2)

♂ — 2.2 mm. Abdomen (from behind)—1.6 x 1.8 mm.

Legs	Femur	Patella-tibia	Protarsus	Tarsus	Total
I	1.0	1.2	0.7	0.4	3.3 mm.
II	0.9	1.0	0.6	0.4	2.9 mm.
III	0.6	0.6	0.35	0.3	1.85 mm.
IV	0.9	0.8	0.5	0.3	2.5 mm.



TEXTFIGURE 2

Cephalothorax very elevated; cephalic region convex, forming a half elliptic surface. Posterior row of eyes straight; PME separated by twice their diameter. Anterior row of eyes strongly procurved; AME separated by their diameter; ALE in the lateral angles of the clypeus. Quadrangle of median eyes as long as wide,

narrower before; AME slightly smaller than PME. *Clypeus* in the median portion higher than the ocular quadrangle. *Chelicerae* strong, vertical; retromargin armed with three little teeth near the base of the fang. *Lip* pentagonal, wider than long. *Legs* with some scattered spines on femur and tibia; protarsi unarmed. *Abdomen* coriaceous above, truncated at the anterior margin, wider than long, almost vertical, covering the thoracic region of carapace. Tegument densely granular, with short hairs. Abdomen clothed with short hairs.

Cephalothorax dark red-brown. Legs I and II, chelicerae, lip, maxillae, sternum and coxae I and II as the carapace. Legs III with femora yellow at their basal two-thirds and black at the distal third; patella and tibia blackish red; protarsus and tarsus yellow. Legs IV with the base of femur yellow; distal half of femur, patella and tibia dark red, protarsus and tarsus yellowish brown. Abdomen black below and above near the anterior margin; whitish above with four circular dots black. Behind the black dots the outline of human lips in black.

Type locality—Pirapitinga, Pirenópolis, Goiás—Brazil.

CAREPALXIS BISPINOSUS n. sp.

♀ — 2.8 mm. Abdomen (from behind)—2.6 x 2.2 mm.

Legs	Femur	Patella-tibia	Protarsus	Tarsus	Total
I	1.3	1.6	1.0	0.5	4.4 mm.
II	1.2	1.5	0.8	0.5	4.0 mm.
III	0.9	0.9	0.5	0.3	2.6 mm.
IV	1.2	1.4	0.9	0.5	4.0 mm.

Cephalothorax very high; cephalic region slightly bifid at the posterior median eyes. Posterior row of eyes slightly procurved; PME larger than PLE and separated by three times their diameter. Anterior row procurved, AME separated by twice their diameter and from ALE by almost three times their diameter. *Clypeus* narrower than the quadrangle of median eyes, which is wider than long, very much narrower before and AME very much smaller than PME. *Chelicerae* strong; retromargin with three teeth near the base of fang. *Lip* triangular, wider than long. *Sternum* very wide, almost as wide as long. *Abdomen* longer than wide; anterior margin with two strong spines. *Legs* as in the other species of the genus; protarsi III and IV with a ventral row of spines.

Carapace with cephalic region dark brown and thoracic region pale yellow. Legs unevenly ringed in dark brown and pale yellow; legs III and IV with distal half of protarsi pink. Chelicerae, lip and maxillae dark brown. Sternum and coxae pale yellow. Abdomen dark below; dorsal surface whitish, with muscular impressions elongate and unevenly marbled in pink; behind and near posterior muscular impressions two strongly procurved lines (one to each impression) and a third line very much wider, behind these two.

Type locality—Monjolinho, Corumbá, Goiás—Brazil (E. 348).

CETONANA PETRUNKEVITCHI n. sp.

♀ — 5.4 mm.

Legs	Femur	Patella-tibia	Protarsus	Tarsus	Total
I	1.8	2.2	1.1	0.6	5.7 mm.
II	1.8	2.2	1.3	0.8	6.1 mm.
III	1.0	1.4	1.0	0.5	3.9 mm.
IV	1.8	2.0	1.8	0.7	6.3 mm.

Carapace low, chagrinée. Thoracic groove short, near posterior margin. Posterior row of eyes recurved; eyes equal, equidistant. PME separated by one and one-half their diameter and at a distance from PLE of twice their diameter. PLE on little tubercles. Anterior row of eyes slightly procurved; AME contiguous, separated from ALE by half their diameter. Quadrangle of median eyes wider than long, very much narrower before. ALE more separated from PLE than AME from PME. Clypeus very narrow. Chelicerae with retromargin and promargin abnormally armed with three teeth. Legs unarmed. Abdomen oval elongate, without scutum.

Carapace, chelicerae, lip, maxillae and sternum dark mahogany brown. Legs I and II pale mahogany brown; legs III and IV pale yellow. Abdomen pale testaceous, whitish.

Type locality—Pirapitinga, Pirenópolis, Goiás—Brazil.

RUDRA IMPATIENS n. sp.

♂ — 3.2 mm.

Legs	Femur	Patella-tibia	Protarsus	Tarsus	Total
I	0.8	1.3	0.5	0.3	2.9 mm.
II	0.6	0.6	0.3	0.3	1.8 mm.
III	0.5	0.5	0.2	0.3	1.5 mm.
IV	0.5	0.7	0.3	0.3	1.8 mm.

Carapace very low and flat; thoracic groove very short and near the posterior margin. Ocular quadrangle twice wider than long, parallel. Eyes 2 equally separated from posterior and lateral anterior eyes. Row of anterior eyes straight. Clypeus very narrow. Chelicerae very short, fissidentate. Sternum wide before. Lip hexagonal, longer than wide. Abdomen very flat, elongate, with terminal spinnerets. Legs I very much stronger than II-IV, with femur and tibia inflated; tibiae armed with three pairs of strong spines and protarsi with two pairs. Legs II with tibiae armed with 1-1 ventral median spines; protarsi with a retroventral basal spine and a proventral distal spine. Legs III and IV unarmed.

Carapace pale olive yellow, with cephalic region black. Legs I with femur, patella, tibia and protarsus black; tarsus pale yellow. Legs II-IV pale yellow. Palpi with external face blackish. Chelicerae, lip, maxillae brown. Sternum and coxae whitish yellow. Abdomen pale yellow.

Type locality—Jaraguá, Goiás—Brazil (E. 330).