



HYUNDAI Technical Service Bulletin

Group	AUTOMATIC TRANSAXLE
Number	09-AT-001
Date	JANUARY, 2009
Model	2010~ GENESIS COUPE V6 2009~ GENESIS V8

Subject
**GENESIS COUPE V6 AND GENESIS V8
 AUTOMATIC TRANSMISSION FLUID LEVEL**

CIRCULATE TO:	<input type="checkbox"/> GENERAL MANAGER	<input checked="" type="checkbox"/> PARTS MANAGER	<input checked="" type="checkbox"/> TECHNICIAN
<input checked="" type="checkbox"/> SERVICE ADVISOR	<input checked="" type="checkbox"/> SERVICE MANAGER	<input checked="" type="checkbox"/> WARRANTY MGR	<input type="checkbox"/> SALES MANAGER

This TSB revises 08-AT-008 to add Genesis Coupe V6 information

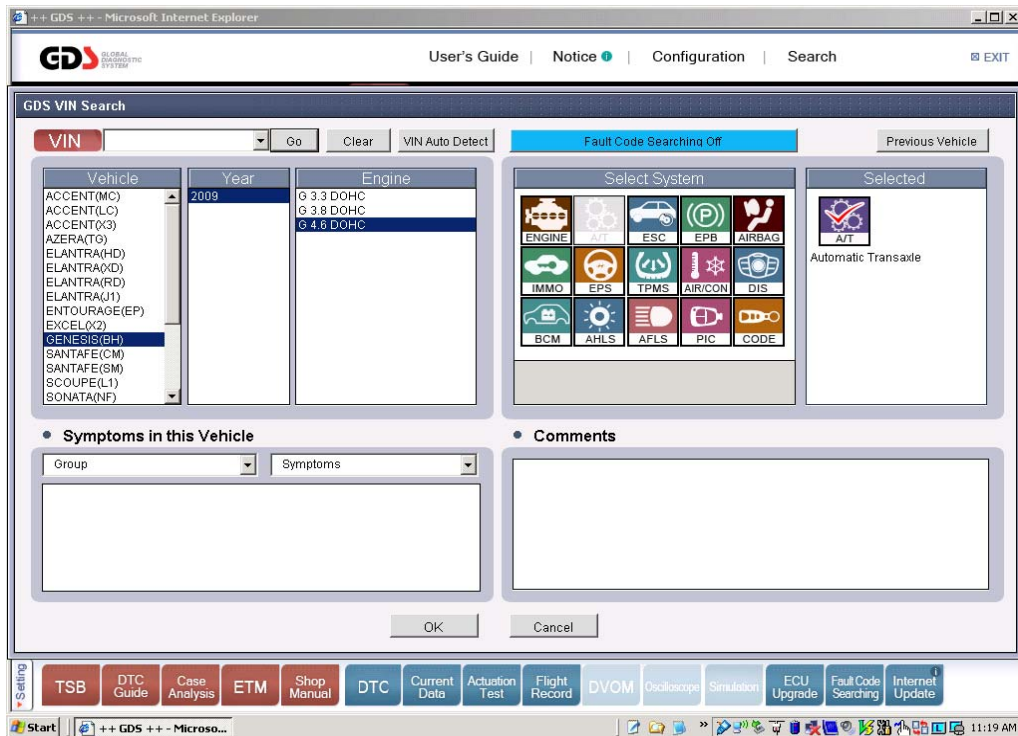
DESCRIPTION:

The Genesis V8 and Genesis Coupe V6 ATF level can be checked by the following procedure:

NOTE: The Genesis V8 and Genesis Coupe V6 use synthetic automatic transaxle fluid (ATF). Use only ATF meeting the M-1375.4 specification approved by Hyundai Motor Company. DO NOT use SPIII or other ATF which may result in degradation of shift quality or transaxle durability.

ATF LEVEL INSPECTION:

1. Attach a GDS and select Genesis V8 or Genesis Coupe V6 and "A/T" menu.



2. Select Current Data and “Transmission Fluid Temperature Sensor”.



3. Drive the vehicle until the fluid temperature is between **86~95°F (30~35°C)**.

4. Firmly apply the brake and then shift into “R”, “N” and “D” and back, pausing 3~5 seconds in each range. Shift into Sports Mode 1 & 2. Repeat two times.

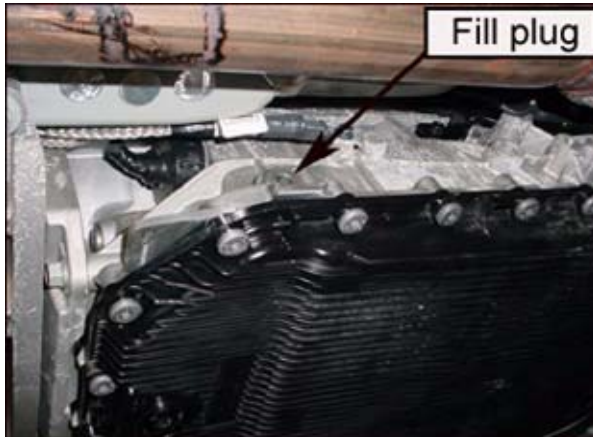


5. Move the shift lever to P, leave the **engine running** and lift the vehicle on a hoist.

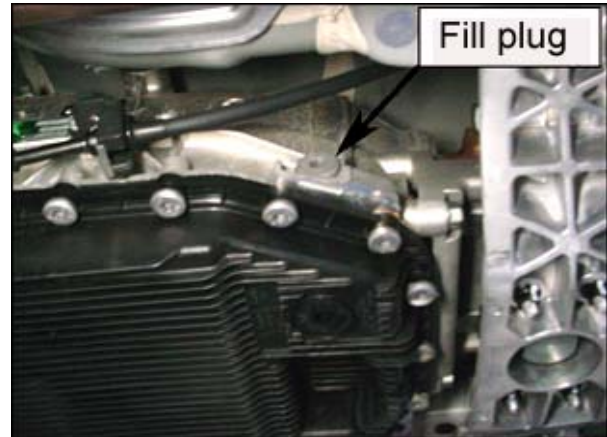


6. Remove the fill plug. The oil level is correct if ATF flows out in a thin oil stream or steady drop-by-drop. If no oil flow occurs, go to Step 7.

NOTE: Collect and dispose of any excess fluid in accordance with local regulations.



GENESIS V8



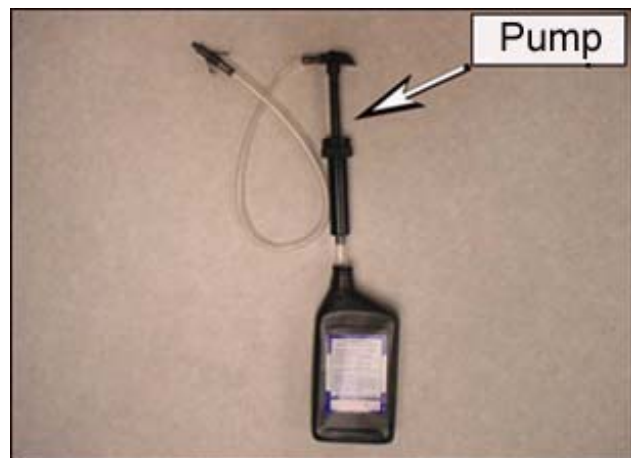
GENESIS COUPE V6

ATF TEMPERATURE = 86~122°F (30~50°C) AND SHIFT LEVER IN "P" AND ENGINE RUNNING

7. Add ATF in 1/4 quart increments until ATF flows out of the fill plug in a thin oil stream or steady drop-by-drop.

NOTE: Use a fluid transfer pump to add ATF (Use the following products or equivalent).

- MAC Tools Fluid Dispenser #MV7201 or #GS19HD
- Snap-on Suction Gun #YA745ADO NOT use SPIII or other ATF.



8. Reinstall the fill plug and tighten to specification of 20~25 lb-ft (2.8~3.5 kgf.m).

PARTS INFORMATION:

VEHICLE	PART NUMBER	DESCRIPTION
2009~ Genesis V8	00232-19001	Shell M-1375.4 Lifeguardfluid6 ATF
2010 Genesis Coupe V6	45261-49000	Fill plug

NOTE: Shell M-1375.4 ATF is also available at BMW dealers

MAINTENANCE SCHEDULE:

DRIVING CONDITION	INSPECT ATF LEVEL	REPLACE ATF
Normal service	37,500 miles/ 30 months	No replacement schedule specified
Severe service		