

IE8 Tip Extenders – 4 Easy Steps to Added Enjoyment of Your IE8!

Disclaimer: Follow this guide at your own risk. I assume no responsibility for any damage caused to your IE8 or any bodily harm as a result of following any or all steps in this guide.

Step 1: Obtain 1/4" inside diameter tubing and desired tips

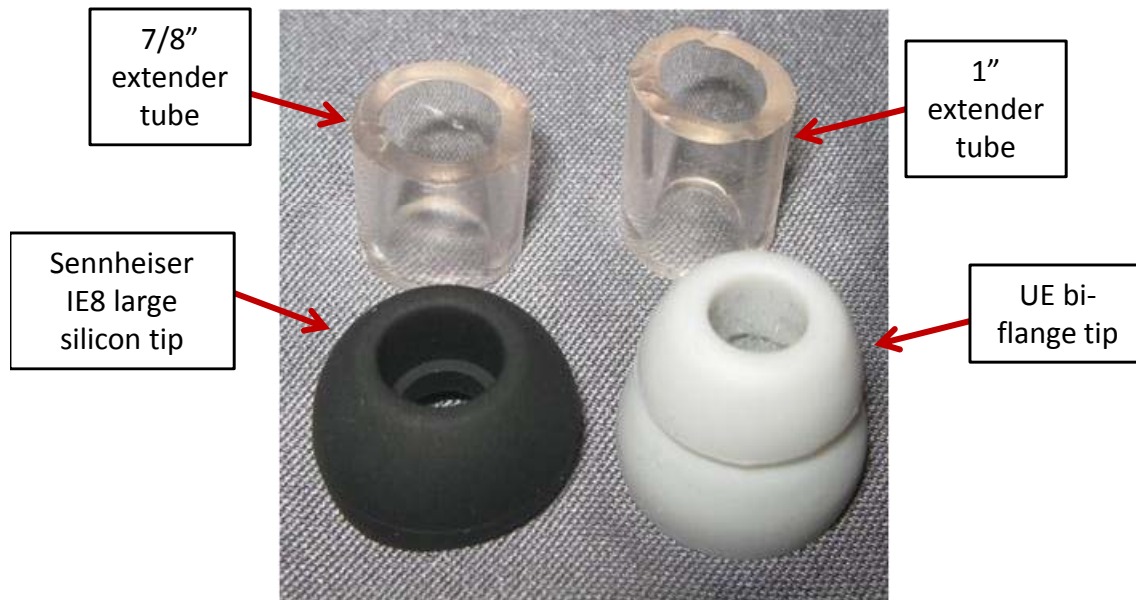
I picked Watts 3/8" outside diameter, 1/4" inside diameter clear vinyl tubing at Home Depot in the plumbing section. It comes in a length of 10 feet, so you can make 60 pairs of extenders! The inside diameter is the important part, as that affects the fit on the IE8 and the tip stem fitting in the tubing.

Any tip made for a large bore IEM should work. I have successfully used the large size of the following:

- Sennheiser stock IE8 silicon tips – extremely comfortable for me!
- UE silicon tips
- UE bi-flange tips
- Skullcandy silicon tips
- ebay silicon tips
- ebay bi-flange tips
- HiFiMan large bi-flange tips (did come lose from time to time)

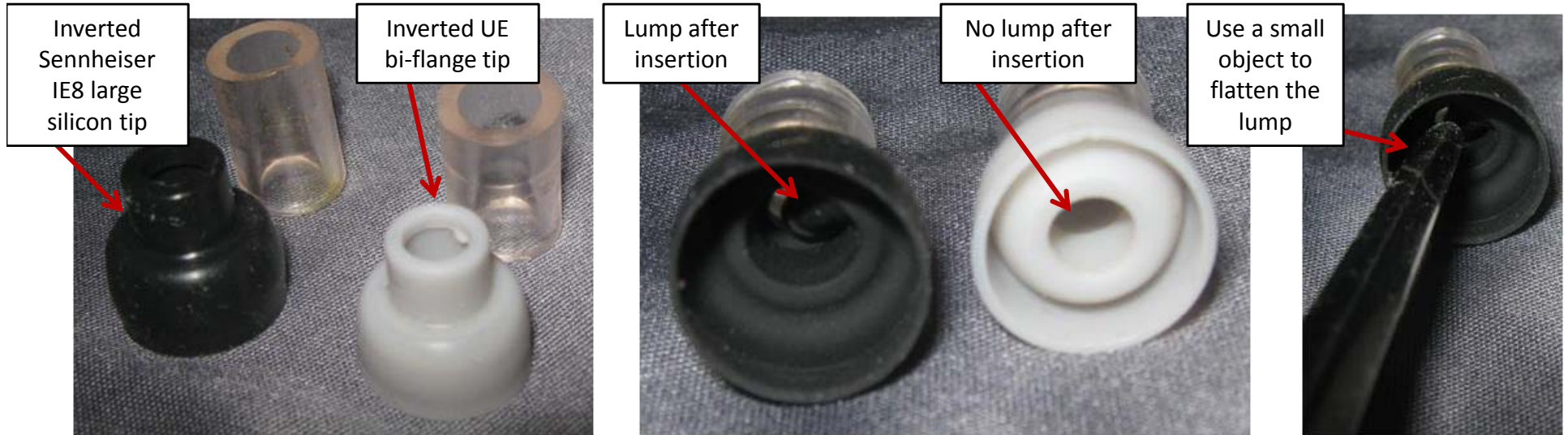
Step 2: Cut tubing to desired length

Anywhere from 7/8" to 1" in length works well for me. The key is not to make them too short so when inserted on the IE8 the stem is not pushed out by the nozzle. As you can see from the picture below, the edge isn't the smoothest for the extender on the right, but I have not experienced any issues with fit, seal, or comfort. You can make the extender tubes longer, but then your IE8 will stick further out of your ears.



Step 3: Invert the tip flange and insert into the tube

Take the tips and invert the tip flange so you can see the stem. For bi-flange, you only need to invert the larger flange to expose the stem. Insert the stem into the tube as far as you can. If it doesn't go all the way, that is OK. If the stem has a lump in it after insertion, take a small object such as a letter opener (what I use), a screwdriver, toothpick, etc, and flatten it as best you can. You can grab the silicon tips and move it slightly back and forth during this process to help flatten out the area. Once inserted, make sure the tip isn't easily removed.



Step 4: Insert the tube on the IE8 and flip the flange back to normal position

Carefully insert the tube on the IE8 until it hits the housing. Make sure the IE8 nozzle is not pushing the tips out and then flip the flange. Enjoy your IE8s with improved sound quality!

