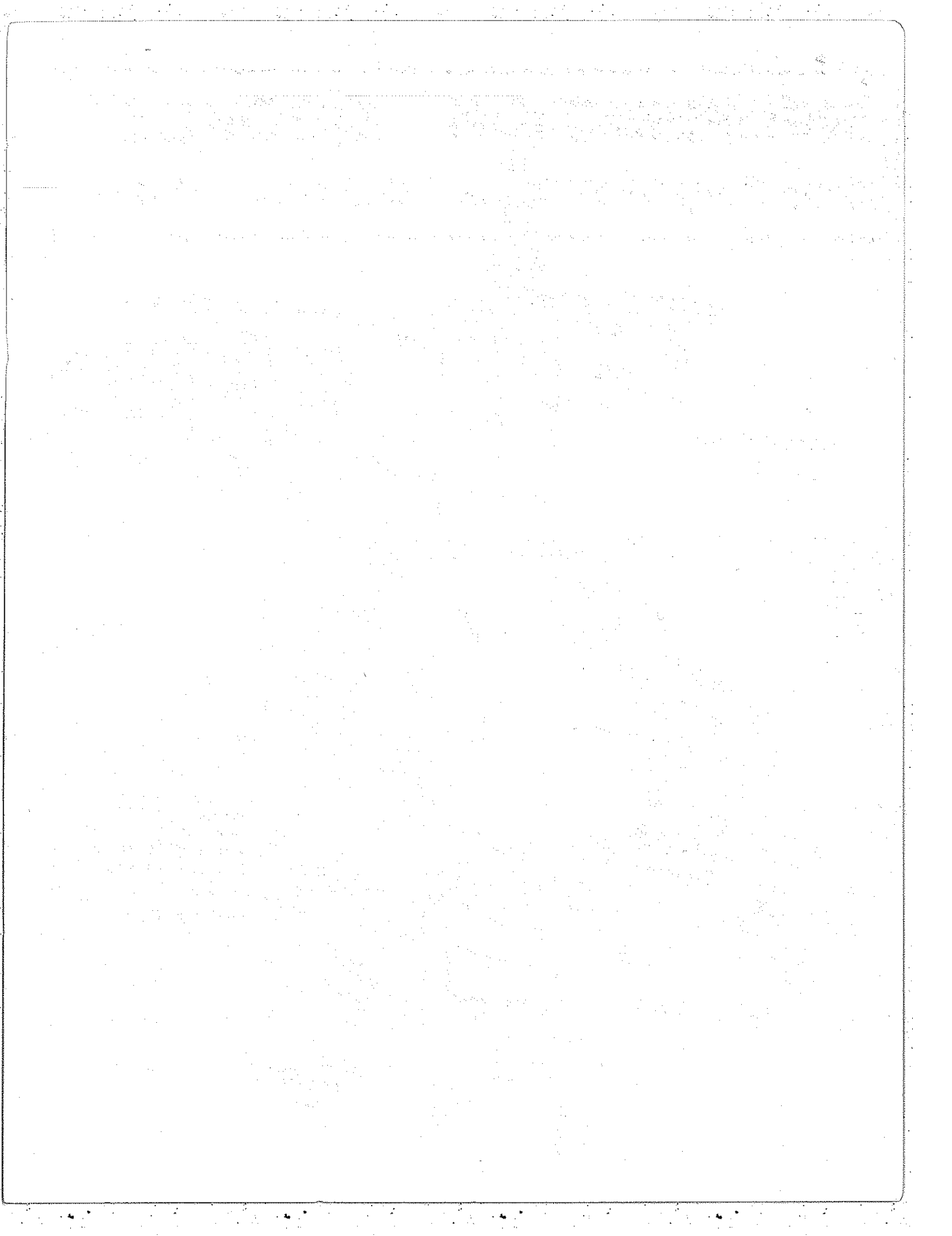


# INFORMATION BOOKLET

124th TRANSPORTATION COMMAND (TML-A)





DEPARTMENT OF THE ARMY  
HEADQUARTERS 124TH TRANSPORTATION COMMAND (TERMINAL A)  
APO 96312

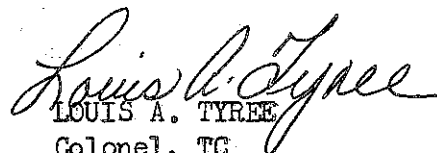
AVCA TC-CO

5 November 1970

SUBJECT: Letter of Welcome

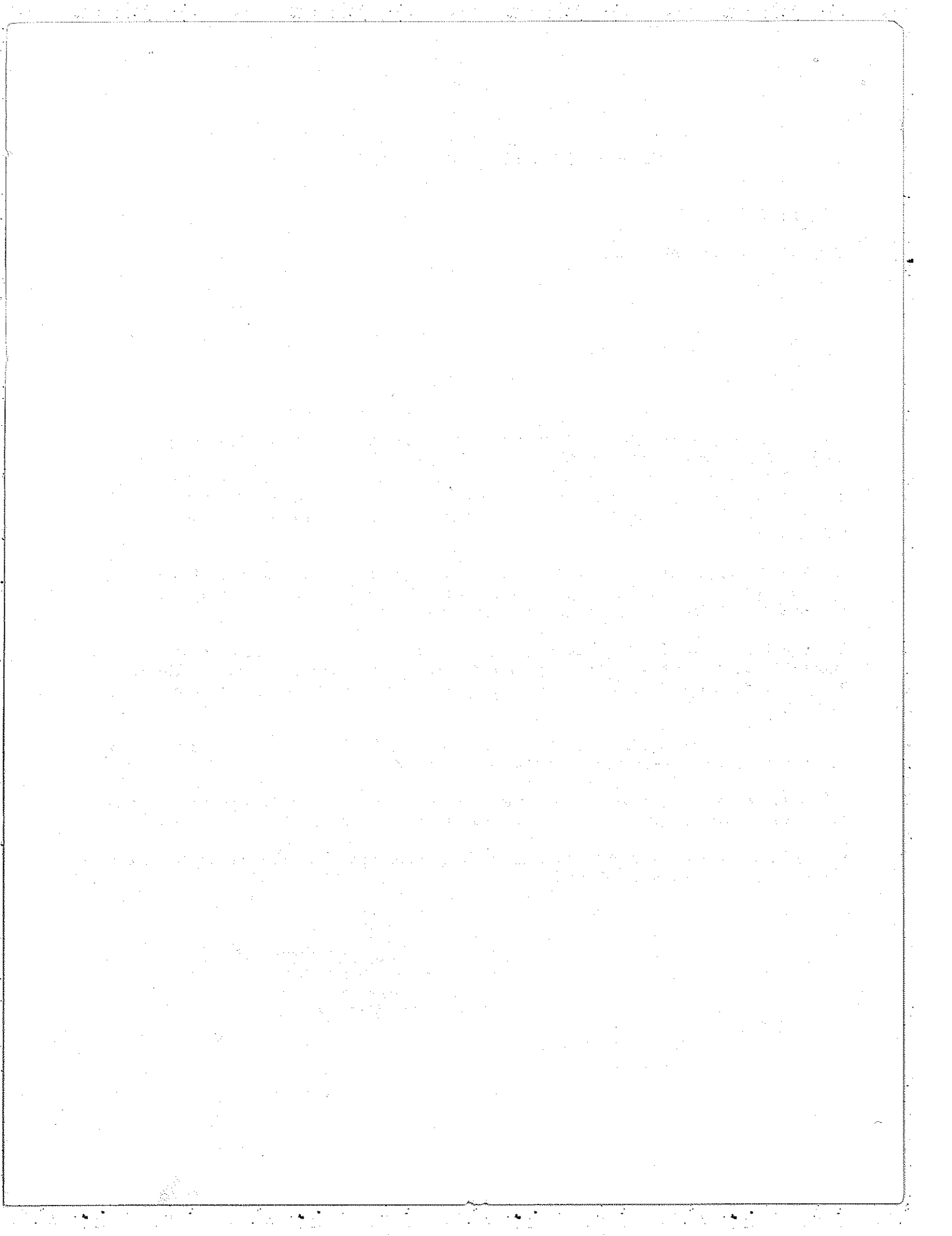
All Newly Assigned Personnel

1. I welcome you to the 124th Transportation Command. Your assignment will offer many new experiences and stimulating challenges. Our organization accomplishes some of the most diversified missions in the United States Army. In the application of your past experiences to your new assignment, you will have vast opportunity to broaden and strengthen the foundation of your knowledge, experience, and development.
2. This booklet has been designed with you in mind as a newcomer to Vietnam. Within its pages you will find information which will guide you in getting oriented and eventually settled into your new surroundings.
3. One thing should always be borne in mind during your stay in Vietnam. We are guests in this country. The people of Vietnam have requested our assistance in laying a solid foundation upon which to build a sound government to guide their destiny.
4. Through our knowledge, with our guidance, and by cooperation between the two governments, this foundation will be established.
5. While here, act as an invited guest, conduct yourself with dignity and treat the local Nationals with respect due them as our hosts.
6. In this manner, you will gain in mutual understanding and work experience during your tour of duty in Vietnam.

  
LOUIS A. TYREE  
Colonel, TC  
Commanding

DISTRIBUTION

1 ea newly assigned individual



## TABLE OF CONTENTS

1. Letter of Welcome by Colonel Tyree	Page 1
2. History of 124th Transportation Command	Page 2
3. Organizational Chart of 124th Transportation Command	Page 4
4. History of Cam Ranh Bay	Page 5
5. Cam Ranh Bay Area Map	Page 7
6. Alert Procedures	Page 8
7. Special Services' Facilities	Page 11
8. Medical Facilities / Veterinary	Page 13
9. Red Cross	Page 15
10. Religious Services	Page 16
11. Education	Page 18
12. United Services' Organization	Page 19
13. Clubs / PX - Hours	Page 20
14. Stateside Telephone Calls	Page 21
15. Postal	Page 23
16. Rest and Recuperation / Map	Page 27

## HISTORY OF 124TH TRANSPORTATION COMMAND

Mobile logistical support is the job of the 124th Transportation Command. Few other units achieve their goals with the versatility of this one. Whether it be by land, rail, sea, or air, the 124th has the resources to move the goods.

Headquartered in Cam Ranh Bay, Vietnam, the 124th Transportation Command is charged with the responsibility of controlling all Cam Ranh Bay Port activities. In addition, the Command provides a line haul truck capability, supervises the Cam Ranh Bay Army airfield, and loads and unloads a shortline railroad. The scope of its activities includes two outports within 15,200 square mile operations area.

Activated on 25 May 1966 as a major subordinate command of the US Army Transportation Center, Fort Eustis, Va, the 124th was designed from its inception for ultimate deployment to Vietnam. While preparing itself to accomplish deployment, it was taxed with the additional mission of commanding and training any newly activated company and detachment size units scheduled for deployment. Fourteen subordinate units were concurrently or shortly after the 124th so activated. Besides its own operational problems, the 124th had to assume the responsibility for making these units operational.

Even with this mission, the 124th deployed to Vietnam within four months of its activation date. The main body arrived in Cam Ranh Bay on 1 October 1966, after a 22 day journey that involved two aerial and three water ports.

Ten days after the main body arrived, headquarters assumed full responsibility for the operations of the Cam Ranh Bay Port, operational control of the 10th Transportation Battalion, 24th Transportation Battalion and five outport locations. The command was also to administratively support the Marine Maintenance Activity, Vietnam (MMAV), and direct the activities of civilian contractors providing a variety of services in the Port Complex, ranging from collecting garbage to providing stevedore services.

From the day that the main body of the HHC arrived at Cam Ranh Bay, a self-help building program has been in effect. Quarters, mess, supply and sanitation facilities were constructed by the men of the headquarters themselves. While working to improve port operations during duty hours, the men applied themselves to improving living conditions during off-duty hours.

From a few general purpose tents, the company area developed into a comfortable cantonment. Simultaneously a headquarters complex rose on a hill overlooking the bay, and the completion of three large quonsets, a conference/briefing room and an observation tower overlooking the entire port complex marked the end of the first three months.

This was just a beginning, however, for very shortly afterward construction was begun on permanent BOQ buildings and permanent company barracks and administrative buildings in the main cantonment area of Cam Ranh Bay. All of the facilities of the HHC rose from the sands of the undeveloped areas of the Cam Ranh Peninsula.

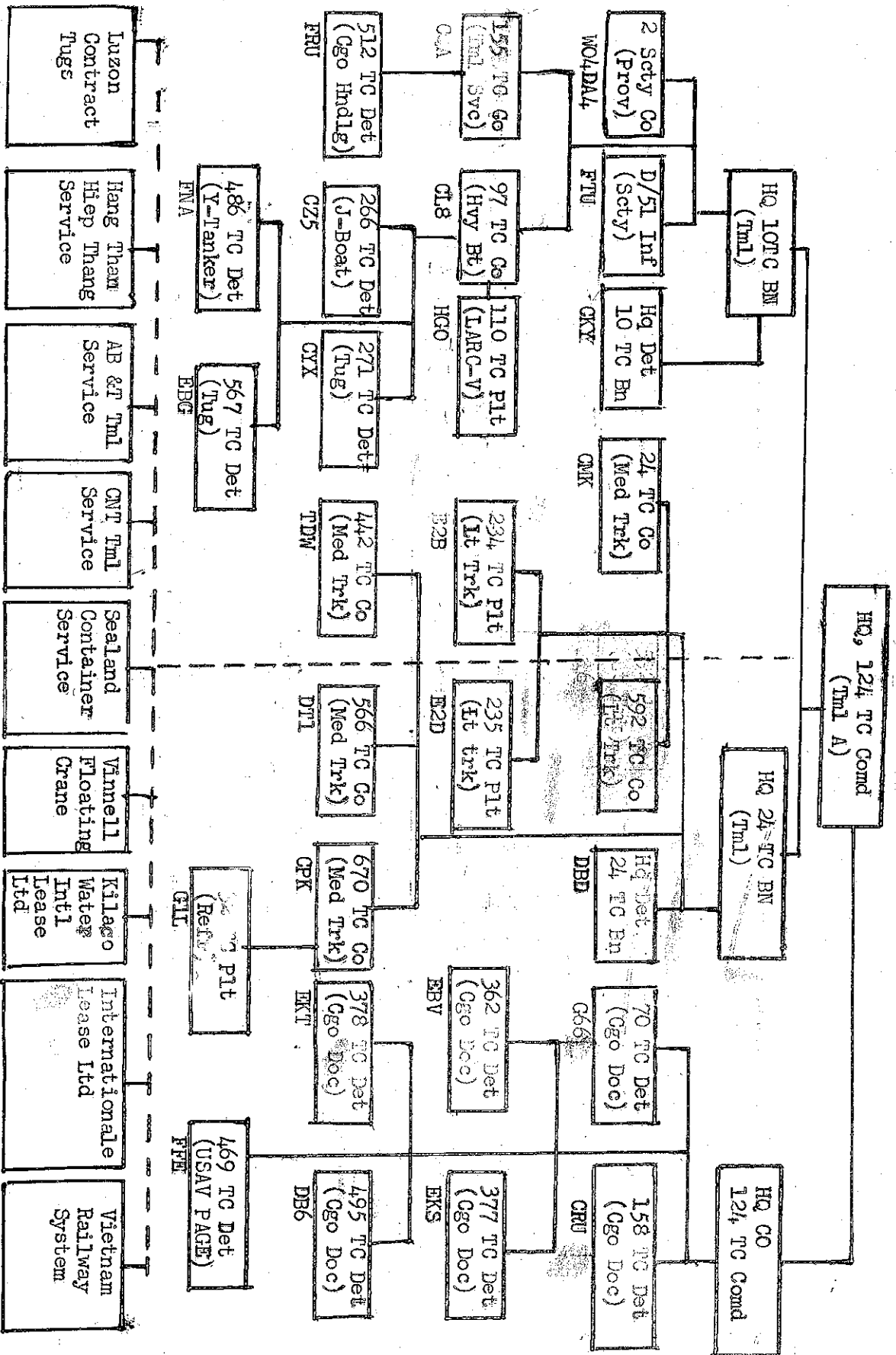
Less than a year after arrival, the 124th had exceeded by more than 100,000 short tons the last quarterly tonnage discharged in Cam Ranh Bay prior to its deployment. The quarter ending 31 July 66, 274,927 short tons had been discharged; the following year, same quarter, the 124th moved 387,807 short tons.

Under the management of the 124th Transportation Command, the port complex of Cam Ranh Bay has matured into the most modern Army port in the world. Through Cam Ranh Bay, the Command moved nearly one quarter of all the cargo handled in Vietnam in the early quarters of 1970, and averaged over 200,000 short tons monthly.

But port activities are not the Command's sole transportation concern. By rail in August '70, it handled 1,049 tons on the shortline railroad mentioned earlier. Of its original five outports stretched over two hundred miles, it still operates Phan Thiet and Phan Rang, and is assisting in the Vietnamization of the Nha Trang facilities. And, as mentioned earlier, the Command is operationally controlling the Cam Ranh Bay Army airfield. Command TOE vehicles range in size from jeeps to twelve ton S&P trailers and five thousand gallon tankers.

Moving logistical materiel has not been the Command's only value to the Army. In the Army's 1970 cost reduction program a significant contribution was made in the form of a \$1,000,000 savings in deep draft stevedoring contracts.

The 124th Transportation Command has contributed mightily through versatility and drive to making the Port Complex of Cam Ranh Bay a major facility in the Republic of Vietnam where once only small fishing villages had existed for many years.



## HISTORY OF CAM RANH

### BAY

Cam Ranh Bay is a natural harbor located approximately 180 miles north of Saigon on the South China Sea. The bay is flanked by dark, feral mountains inland and a seaward peninsula of barren wasteland covered with shifting dunes.

Although for centuries the peninsula lay uninhabited, the bay offered refuge for storm tossed junks and sampans. Despite the area's intense heat, torrential rains and high winds, several fishing hamlets eventually took root on the inner shores.

Early in the nineteenth century a French Marquis named De Bathelmy settled on the peninsula. De Bathelmy envisioned a large commercial potential in the area and subsequently began operations directed toward developing Cam Ranh Bay as a provisioning station for Western Pacific shipping.

De Bathelmy is believed to have been instrumental in establishing the village of Cam Ranh, which purportedly served as a penal colony during the 19th century. In 1939, quantities of human remains, many still bearing chains and name plates, were discovered by the French, in the vicinity.

The area was relatively obscure, historically speaking, during the 19th century. In fact, it is not until 1905 that it comes of interest again. In that year, the ill-fated Russian fleet which was bound for a disastrous encounter with the Japanese sought storm shelter in the bay.

In 1932, the Japanese took possession of Cam Ranh Bay, but did little to improve existing conditions. The French returned in 1939 and established a small military installation. The Japanese, however, garrisoned the area in 1942, imprisoned the French troops in their barracks, and retained control until the end of World War II.

The Republic of China under Chiang Kai-Shek sent 30,000 troops into Vietnam in 1951. Of these, 6,000 troops were based at Cam Ranh. The French, however, placed these in detention and succeeded the following year in returning them to China.

Cam Ranh Bay was not significantly involved in the Viet Minh struggle to free Vietnam from French dominion. It was, however, utilized after the Geneva Accord of 1954 as a principal evacuation area for the French Army. In July 1956, the last of the French troops sailed from the harbor, ending a century of colonial rule.

Soon after the French evacuated, the Communist government of North Vietnam violated the Geneva Accord. Influenced by Red China, subversion of the duly elected Republic of Vietnam government was instigated. Attempts were made to infiltrate democratic programs. Coercion and intimidation became common practices as a guerilla war started against the new government.

The United States formed a small advisory group and rendered limited material assistance to the beleaguered country at its request. As infiltration from North Vietnam increased, the terrorist Viet Cong commensurately increased the pace of their attack. This expansion of the conflict induced the United States to increase its level of assistance. This included the insertion of American fighting units and enormous logistical support.

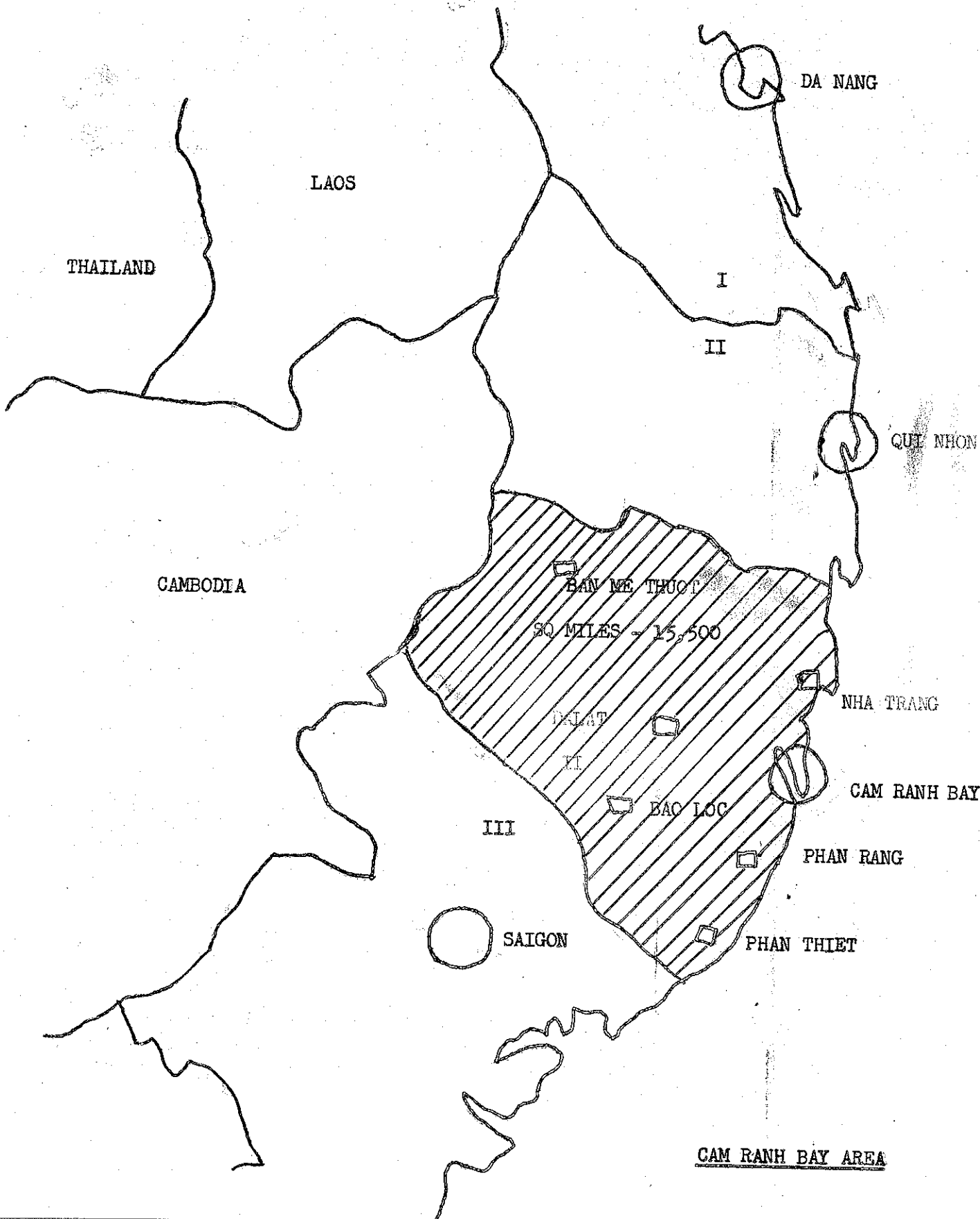
Cam Ranh Bay's potential as a major logistical complex was readily apparent. It was also obvious that existing facilities would be inadequate to sustain the projected flow of material and supplies. What followed was one of the swiftest logistical buildups in history. Despite the perversity of the elements, piers, airfields, and petroleum tank farms were constructed; roads and hardstands were laid down; warehouses, maintenance buildings and cantonment areas sprang up.

In little more than a year, Cam Ranh Bay was converted into Vietnam's second largest seaport. Today, deep draft vessels can be brought along side any one of five piers or can be anchored in the harbor; those so anchored have their cargo discharged by lighterage to South Beach, which is also used for loading and discharge of intra-coastal shipping.

From the fishing hamlets which first inhabited the bay area, Cam Ranh City has begun to develop. This city, composed of six villages (Ba Ngoi, Cam Ranh, Cam Binh, Suoi Vinh, Cam Phuc, and Cam Loc) has a population of over 100,000. Development plans include industrial and commercial activities primarily. Agriculture has a limited scope due to lack of arable land and water. There are large quantities of high grade silica sand, coral limestone and salt available as raw materials.

The entire civilian and military chain of command visited Cam Ranh Bay during the period September 1966 - November 1967. It should be noted that former President Johnson's visit to Cam Ranh Bay was his only stop in Vietnam and marked the first time in history that a United States President visited this country.

In view of the present state of the area, it is not difficult to foresee the eventual development of Cam Ranh Bay. There has already been laid the foundation for a great seaport. As time passes, construction will gradually be completed and activities will move to a continuing program of refinement.



CAM RANH BAY AREA

## ALERT PROCEDURES

1. GENERAL Alert conditions described herein are used to designate increased enemy threats to US personnel and installations. These alert conditions need not be announced in sequence. Declaration of an alert condition requiring increased readiness demands execution of all actions included in lesser readiness conditions. Actual alert conditions are initiated by the Joint Defense Operations Center as required by higher command and/or by local situation. Declaration of Sector II alert status is reserved to the Commanding General, USASUPCOM-CRB as Sector II Ground Defense Coordinator.

2. ALERT CONDITION WHITE Alert condition white is the emergency security posture which will be maintained on a sustained basis to meet minimum security standards.

a. Individuals will:

(1) Observe the Nine Rules of personal conduct prescribed for personnel of this command. (See Appendix I)

(2) Obey local regulations regarding carrying and safeguarding of individual firearms.

(3) Insure constant security of military equipment, with special attention to weapons and vehicles.

(4) Travel in pairs or groups when moving outside of secure areas.

(5) Avoid large crowds of civilians when traveling in non-secure areas.

(6) Use only authorized public transportation.

(7) Obey curfew regulation.

(8) Report unusual or suspicious events to the proper authorities promptly.

3. ALERT CONDITION GREY This posture is to be implemented when intelligence reports indicate a need for increased vigilance. Sub-sector Ground Defense Coordinators will reinforce areas as they deem appropriate to improve the capability to detect threats to sensitive areas. Such sensitive areas include, but are not limited to, command facilities, key personnel quarters, power supplies, ammunition and fuel storage and handling areas.

4. ALERT CONDITION YELLOW This condition will normally be implemented when reliable intelligence data indicates that the installation is going to be attacked, time unknown.

5. ALERT CONDITION YELLOW (OPTION I) This posture is to be implemented under the same conditions described in paragraph 4 above. In exception to the measures prescribed in paragraph 4 above, individuals may go to and from government mess and billets in government transportation.

6. ALERT CONDITION YELLOW (OPTION II) This posture is to be implemented under the same conditions described in paragraph 4, above. In exception to the measures prescribed in paragraph 4, above, commanders may permit local and third country nationals to remain in compounds until completion of duties. These local and third country nationals essential to operations or welfare, i.e., mess personnel, interpreters, CORDS personnel etc., may return in the morning.

7. ALERT CONDITION YELLOW OPTION III This posture is to be implemented under the same conditions described in paragraph 4, above. In exception to the measures prescribed in paragraph 4, above, commanders may prescribe the manning level of bunkers, guard posts and other activities, consistent with the situation, to insure continuity of operations the following day.

8. ALERT CONDITION RED (OPTION I) This condition will be implemented when the installation is under actual attack or intelligence data indicates an attack is imminent.

9. ALERT CONDITION RED (OPTION II) This condition will be implemented when external defense forces have been over run or are unable to cope with the threat of known enemy forces advancing toward or attacking the installation.

APPENDICES:

APPENDIX I - Nine Rules

NINE RULES

FOR PERSONNEL OF US MILITARY ASSISTANCE COMMAND, VIETNAM

1. Remember we are guests here: We make no demands and seek no special treatment.
2. Join with the people! Understand their life, use phrases from their language and honor their customs and laws.
3. Treat women with politeness and respect.
4. Make personal friends among the soldiers and common people.
5. Always give the Vietnamese the right of way.
6. Be alert to security and ready to react with your military skill.
7. Don't attract attention by loud, rude or unusual behavior.
8. Avoid separating yourself from the people by a display of wealth or privilege.
9. Above all else you are members of the US Military Forces on a difficult mission, responsible for all your official and personal actions. Reflect honor upon yourself and the United States of America.

SPECIAL SERVICES FACILITIES

<u>FACILITY</u>	<u>LOCATION (SEE ATTACHED MAP)</u>	<u>PHONE</u>	<u>HOURS OF OPERATION</u>
Special Services Office	4 blocks south of Main PX next to pre-fab yard	4400/4470	0730 - 1830 Mon - Sun
16mm Film Library	Special Services Office	4470/4400	0730 - 1700 Mon - Sun
Electronic Shop	Adjacent to Provost Marshal	4470/4400	0730 - 1800 Mon - Sun
R & R Center	Adjacent to Special Services Office	4470/4400	0730 - 1800 Mon - Sun
Sports Pad	One block east of Main PX	3287	0730 - 2130 Mon - Sun
Library	Behind Main Chapel	2865	1000 - 2200 Mon - Sun
Arts & Crafts Shop	Behind Provost Marshal's Office	3945	1300 - 2200 Tues - Sun
Entertainment Center	Showmobile located next to Special Services Sports Pad	4470/4400	Will be publicized
Skeet Range	Two blocks east of 33d Ord Bn Motor Pool on Howell Beach Road	4470/4400	1300 - 1800 Sundays only
Softball Field #1	Gatesville, adjacent to EOQ area.	3287	Daylight hours
Softball Field #2	South Beach	3287	Daylight hours
Tiger Lake	Behind White House	3565	1000 - 1800 daily
Howell Beach	Road to Market Time		1000 - 1800 daily

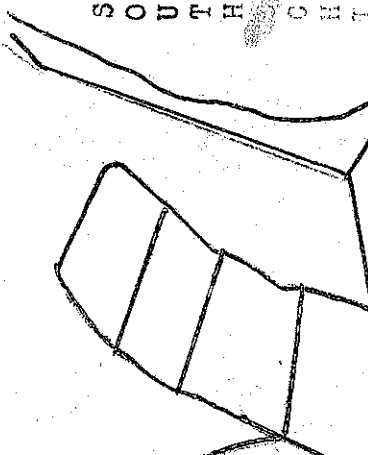
---

HOURS OF OPERATION OF TIGER LAKE AND HOWELL BEACH ARE SUBJECT TO WEATHER CONDITIONS



SOUTH CHINA SEA

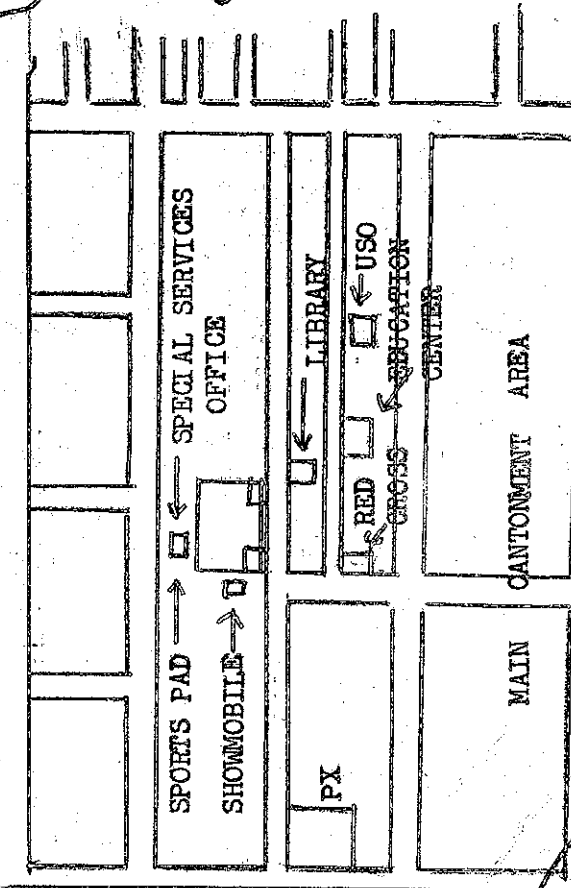
HOWE BEACH



SKETT RANGE

RECREATION AREA

- SWIMMING
- SKIING
- SAILING
- BOATING



14TH AP  
 22ND REPL BN  
 AIR FORCE BASE  
 NAVAL AIR FACILITY

OFFICERS CLUB

STEAM BATH

FINANCE POST OFFICE

NCO CLUB

TIGER LAKE

PERSONNEL SERVICE CENTER

HHC 124th

ELEC SHOP

CRAFT SHOP

HQS SURCOM

SPEC SVCS WATER ACTIVITIES

CAM RANH BAY

14th Trans

CAM RANH VILLAGE

SOUTH BEACH

## MEDICAL FACILITIES

### GENERAL DISPENSARY

Location: Next to the PX.  
Sick Call hours: 0730 - 0830 daily. First come, first serve basis.  
Emergency: 24 hours daily.  
Shots: 1300 - 1400 Mon - Fri.  
Physicals: 1300 - 1500 Mon - Fri.  
Duty Hrs Call: 3623/3678. After duty hrs call 4496. A&D 4681/4496. 24 hours ambulance service provided by the 418th Med Co (Ambulance). Call: 4119.

### DENTAL CLINIC

Location: Across from MP Station. Telephone 4661/4186/4621 at any hour.  
Sick Call: 0630 - 0930. First come, first serve basis for initial treatment.  
Appointments made thereafter as necessary.  
Emergency: 24 hours daily.  
Come in anytime between 0730 - 1030 Mon - Sat for an initial exam and X-rays to start work on teeth.  
You are responsible for your own records. Dental records are not kept at the Clinic. Cleanings are made by appointment only.

### OPTICAL CLINIC

Location: Next to the General Dispensary.  
Hours: Monday thru Friday 0730 - 1600  
Saturday - 0730 - 1500  
Sunday - Closed

Patients are seen by appointment and during sick call. Military personnel are eligible to be examined, fitted and issued a pair of glasses. Telephone 3048 for appointment.

### MENTAL HYGIENE CONSULTATION SERVICE

The MHCS for the CRB area is located in building T2070 (South Beach). The staff consists of a Psychiatrist, Social Work Officer and 3 Social Work Technicians who are assigned to the 98th Medical Detachment (KO).

The mission of this unit is to aid command in the conservation and effective utilization of military manpower and in maintaining it at the highest peak of efficiency through the application of sound mental health principles, and to provide the best professional services possible for the evaluation, treatment, and disposition of the individual showing signs of maladjustment or mental illness.

Should an individual desire to seek help for a personal problem we advise him to contact his Commanding Officer who in turn will request an appointment for the individual at MHCS.

### VETERINARY ACTIVITIES

The Veterinary Clinical Facility is located on Tiger Lake Road and is open between the hours of 0830 - 1600 hours on Tuesdays and Thursdays ONLY. Treatment is limited to immunizations and out-patients.

It is mandatory that all pets be immunized against rabies, since this disease is highly fatal. Rabies is primarily transmitted by the bite of an infected animal and can be contracted by all warm-blooded animals (including man). It is for these reasons that it is recommended that individuals stay away from stray animals.

If a person is bitten by an animal he should report immediately to the nearest medical treatment facility.

The 483rd USAF Veterinary Hospital located in the vicinity of the 14th Aerial Port operates from 0800 - 1500 hours Monday through Saturday. All strays for impoundment and rabies bite cases for quarantine will be taken to the 483rd USAF Veterinary Hospital. A letter of authorization for ownership of a pet from an individual's commander will be required for any pet treatment at the 483rd USAF Veterinary Hospital.

Any animal involved in a bite incident should not be destroyed, but should be impounded and observed for a least 10 days in the veterinary clinical facility.

## AMERICAN RED CROSS

The American Red Cross Office at Cam Ranh Bay Army is located in the white building across the street from 54th General Support Group Headquarters and in the vicinity of the PX and across the street from Main Post Chapel.

The office is open each day from 0800 until 1700. The phone numbers are 3004 and 2588. After duty hours, 3333 and 3331.

For emergency situations which arise after duty hours, please call the Staff Duty Officer at Support Command headquarters and Duty Officer or Duty NCOIC will give you the name and phone number for the duty worker.

All American Red Cross Services which are available any place in the world where American Military Personnel are located are available to you here at Cam Ranh Bay.

These traditional services of Red Cross include: 1) Reporting and communications - this can include health & welfare reports on your family, or your family, or verification of some emergent situation or serious problem to help your commander make a decision regarding emergency or compassionate leave. 2) Counseling on personal and family problems; 3) Counseling regarding charge or government benefits; 4) Financial assistance primarily to include personal needs, loans and funds for travel and maintenance while on emergency leave.

Remember in an emergency the doctor or lawyer or some authority will recommend your presence: the Red Cross will verify the recommendation; and the military authorities decide whether or not emergency leave will be granted.

Please feel free to come by your Red Cross office and get acquainted.

CHAPLAIN ACTIVITIES

SUPPORT COMMAND AREA & 124TH TRANSPORTATION COMMAND AREA

Chaplain Donald E. Williams (Major)

<u>PROTESTANT</u>	<u>DAY</u>	<u>TIME</u>	<u>CHAPEL</u>
	Sun	0730	Main Post
	"	0830	262nd QM Bn
	"	0900	South Beach
	"	0900	Frontier
	"	0900	Seaside
	"	0900	191st Ord Bn
	"	1000	Larson Memorial
	"	1000	Main Post
	"	1030	24th TTP
	"	1800	24th Trans Co Area
	"	1930	Main Post
	Wed	2000	Main Post (Bible Study)
	Thu	1930	Main Post (Choir Practice)
<u>CATHOLIC</u>	Sun	0730	Frontier
	"	0900	Main Post
	"	1015	South Beach
	"	1030	22nd Replacement Chapel
	"	1130	Frontier
	"	1700	Main Post
	Daily	1145	Main Post
	Sat	1800	Main Post*
	"	1800	Larson Memorial*
			*Fulfills Sunday Obligation)
			½ hour before every Mass
			CONFESSIONS
<u>JEWISH</u>	Fri	1930	Base Chapel - Air Force Base
<u>DENOMINATIONAL</u>			
<u>Episcopal</u>	Sun	0900	AF Hosp Chapel*
	"	1130	Main Post Chapel*
			*(Holy Communion)
<u>Latter Day Saints</u>	Sun	1330	12th AF Hosp Chapel (Priesthood Meeting)
	"	1900	12th AF Hosp Chapel (Sunday School)
	Wed	1930	MIA, 12th AF Hosp Chapel
<u>Christian Science</u>	Sun	1630	Seaside
	Thu	1930	Seaside (Testimony Meeting)
<u>Lutheran</u>	Sun	1300	Main Post

<u>Pentecostal</u>	Sat	1930	Main Post
<u>Church of Christ</u>	Sun	1030	Seaside
<u>Seventh Day Adventist</u>	Sat	0930	6th Conv Center Chapel
<u>Baptist</u>	Sun	1930	6th Conv Center Chapel
	Wed	1930	6th Conv Center Chapel (Service)

## EDUCATION

**YOU'RE INVITED TO THE ARMY EDUCATION CENTER:** We want you to visit us because of your interest in what the Education Center can do for you and your career in the Army and after you leave it. We are located in the Trailer buildings across from the Main Post Chapel. We are open 0800 - 1730, 1900 - 2200 Monday through Friday and 0800 - 1600 Saturday and Sunday.

**WILL YOU HAVE TIME:** You may think your duty hours here are too long to leave much time for self-improvement, but with the surrounding area off-limits your choice of how to spend your off-duty hours are limited. Improving your knowledge and skills is one of the better alternatives.

**COLLEGE CREDITS:** The Army Education Center is a campus of the University of Maryland. That means that in Maryland classes at the Education Center you earn resident credit, readily transferrable to other colleges. There are five eight-week terms a year: September-October, November-January, January-March, March-May, June-July. Each course carries three semester hours credit. You may receive tuition assistance for \$45 of the \$60 tuition for a course. Classes are taught either by full-time civilian instructors from the University or by part-time instructors from this Post. All are fully qualified, with graduate degrees in subjects taught.

**GROUP STUDY:** Frequent USAFI group study courses are offered for high school or college credit and for brush-up, especially for GED tests. A Spoken Vietnamese course is offered every eight weeks.

**USAFI CORRESPONDENCE:** Most colleges and high schools give credit for USAFI correspondence courses. Enrollment, including books, costs \$5, and after passing an end-of-course test a student gets a second free enrollment.

**COLLEGE CORRESPONDENCE:** By contract with USAFI, 46 of the leading universities offer correspondence courses to Army personnel at about one-fourth the rate charged civilians. Enrollment, including books, usually is between \$15 and \$25.

**GED TESTS:** The Army and the Departments of Education of most states accept satisfactory high school GED test scores as the equivalent of high school graduation. Testing at the Education Center begins at 0800 and 1300 hours Monday through Friday.

**CLEP (College GED) TESTS:** Most colleges and universities consider satisfactory scores on College Level Examination Program tests for credit as recommended by the American Council on Education--i.e., six semester hours for each of the five tests. Testing begins at 0800 and 1300 hours Monday through Friday.

**OTHER EDUCATION SERVICES:** College admissions counseling--including use of our college catalog library (over 800 volumes)... SAT and ACT tests and Grad, Record, Grad, Record Business, and Grad. Record Law exams... diagnostic tests to indicate academic abilities and deficiencies... counseling on terminal and non-terminal bootstrap leave for college credit and degree-completion:

FOR THESE AND MANY OTHER SERVICES COME TO THE ARMY EDUCATION CENTER: TEL 2660.

U S O

Hours of Operation: 0730 to 2200 hrs  
daily

3101

The United Service Organization is a voluntary civilian agency through which the people of the United States, in peace and war, serve the religious, social, spiritual, welfare, educational and entertainment needs of the men and women in the Armed Forces. The USO is located east of the PX (See Map). USO Cam Ranh Bay is decorated according to state-side tastes and sports a game room, snack bar, library, front lounge, business office and several enclosed areas where one can relax and get away from it all.

The USO offers at the reception desk, luggage check counter, flowers by Air, concession Montagnard products, cigarette lighters, and flags from the 50 states; contemporary greeting cards, R&R information, as well as plaque or lighter engraving and portrait painting concessions.

The USO game room offers pool, ping pong, a mini library with free books, an area for informal jam sessions and state books to sign and maybe find a friend from your hometown; a snack bar which offers free coffee, a menu of hamburgers, cheeseburgers, sandwiches, french fries, soda, milkshakes, and sundaes.

The USO offers a package wrapping service, a soundproof MARS telephone booth, daily afternoon movies, table games, free stationery, psychedelic posters, post information, free playing cards, pens, and the opportunity to borrow musical instruments.

In addition to these regular facilities, the USO Cam Ranh Bay offers: free dinners at least twice a month and free milk shakes on your birthday. Special programs include, Las Vegas Night, Bingo, show your own slides night, cook outs, contests and tournaments, commercial entertainment, soldier shows and celebration of stateside holidays.

We welcome you to Cam Ranh Bay and invite you to visit us and get acquainted.

OPERATIONAL HOURS

CLUBS

Main EM Club:

1300 - 2130 hours daily

NCO Club:

1130 - 2130 hours daily

Officers Club:

1130 - 2200 hours Tues thru Sun  
Mondays closed

POST EXCHANGES

Main Exchange:

Monday - 1000 to 1900 hours  
Tuesday - 1000 to 1900 hours  
Wednesday - 1000 to 1900 hours  
Thursday - 1000 to 1900 hours  
Friday - 1000 to 1900 hours  
Saturday - 1000 to 1900 hours  
Sunday - 1000 to 1900 hours  
Vietnamese Holidays - Closed

South Beach Exchange:

Monday - Closed  
Tuesday thru Sunday - 1000 to 1900 hours

## STATESIDE PHONE CALLS

### MILITARY AFFILIATED RADIO SYSTEM (MARS)

#### ARMY MARS

510th Signal Company (AA) operates the Army MARS facility for utilization of all military personnel. This facility is operated 12 hours a day, 1800 to 0600 hours, 7 days a week. As the station is located in a restricted area, individuals are advised not to go to the station. A phone call is sufficient, the numbers to call being 3264 and 3641. One thing that should be kept in mind when attempting to make a MARS call is that someone else might be trying to place a call at the same time and the phone might be busy. By all means, try again after a short time.

Once you have contacted a station operator, the following information will be required: telephone number, area code, city, state, is the call person to person or station to station, name of person being called (person to person), your name and number where you can be reached (this is very important as many calls have been cancelled because of personnel not being at the given telephone number).

Priority calls are limited to hospital patients and Red Cross priority for emergency situations. They take precedence over all calls.

There is no charge for using the MARS facility. The phone call is charged from point of contact in the United States to the person you are calling and the charges are automatically reversed. For example, if you make a call to Phoenix, Arizona and the point of contact is Los Angeles, the person called would pay for the call from L. A. to Phoenix.

All phone patches that are not completed in a twelve hour period are automatically cancelled. If you have placed a call and have not gotten through to your party by 0600 hours you must re-book your call. The station places 800 to 1200 calls a month and the completion of each call requires coordination with the stateside radio operator and his placing your call to the party in the United States.

Your cooperation and patience will be greatly appreciated by the personnel operating the station. Should you not be able to place a call, do not hesitate to try again another day. The MARS station is here to serve you.

#### NAVY MARS

Navy MARS accepts calls on Tuesday through Saturday only. Bookings and calls are from 0700 - 1100 and from 2000 through 0200. MARS calls other than stateside are as follows: Phillipines - Wednesday through Friday 1800 hours only - on Military Bases exclusively. Japan - Tuesdays with bookings at 1730 hours and calls after 1800. Guam - Wednesday and Fridays with bookings at 1730 hours and calls after 1800 hours.

DIRECT CALLS: TEL: 2301 EXT 167

The USO located at the 22nd Replacement Battalion (only 20 minutes by vehicle) operates a direct line to the United States available to all personnel for emergency and other personal calls. Calls can be made Monday and Saturday and book-

ings are accepted beginning at 0800 hours on the same day. Calls are placed by  
USO personnel between 1200 - 1300, 1400 - 1600 and 2000 - 2200 hours.

You must be physically present when your call is placed. Ask when booking your  
call when you should be present to accept your call. Cost is \$3.00 per minute  
for station to station calls and \$4.00 per minute for person to person calls.  
Calls are normally limited to 5 minutes but you may talk longer.

## POSTAL PROCEDURES

### PURCHASE OF MONEY ORDERS

There is no fee for the purchase of money orders. To purchase money orders the following items are required:

- a. ID card with SSAN
- b. MACV #5 Card
- c. Completed MACV Form 385 (available at every APO and Bank).
- d. A pre-addressed envelope to payee in the United States, its territories, or possessions, or APO's / FPO's outside of RVN.
- e. Commanders Certificate for money order purchases in excess of \$200.00.

No one is authorized to purchase money orders for another person.

### FREE MAILING PRIVILEGES

1. Members of the US Armed Forces (Army, Navy, Air Force, Marines, and Coast Guard) stationed in the RVN or contiguous waters are authorized free mailing service. This privilege is applicable to mail addressed to foreign countries; the United States; its possessions or territories; and Army, Navy and Air Force Post Offices.
2. Free mailing service is limited to personal letter mail and post cards in the usual generally accepted form, and sound recorded communications having the character of personal correspondence. Inclosures such as pictures and clippings, which are incidental to the communication may be inclosed.
3. Merchandise, printed matter, newspapers, magazines, and advertising matter may not be inclosed.
4. Personal letter mail, post cards and sound recorded communications mailed under the free mailing may not be registered, insured, or certified. Special delivery is authorized upon payment of the required fee.
5. The following procedures apply to mail addressed to the United States, its territories or possessions, and to Army, Navy and Air Force Post Offices: (Sample A) Appendix I
  - a. Article must bear a complete return address to include grade, name, Social Security Account Number, and unit of assignment.
  - b. The word "Free" in the handwriting of the sender will appear in the upper right corner.
  - c. Article will not be indorsed "Airmail" or bear specially designed Airmail covers. Airmail envelopes may be used when other than airmail envelopes are not available.

6. The following applies to mail addressed to a foreign country: (Sample F)

Appendix I

a. "Postage Paid---Port Paye" may be stamped with a rubber stamp in the upper right corner of the address side of the envelope. This statement cannot be hand printed or typewritten. (Do not write or otherwise mark "Free" on the envelope).

b. If a rubber stamp is not available the upper right corner should be left blank. The APO will affix this information when omitted by sender.

c. Airmail envelopes are authorized for international mail. Envelope must be of distinctive airmail design or contain a Post Office Department label "Air-mail---Par Avion."

7. Mail addressed in-country will be the same as regular mail with address and return address. The word "IN-COUNTRY" will be written in the upper right hand corner of the envelope. (Sample C) Appendix I

AIR TRANSPORTATION OF ORDINARY MAIL

1. SAM (Space Available Mail): Parcels paid at surface postage rates not exceeding 5 pounds in weight and not exceeding 60 inches in length and girth combined are airlifted to, from, or between APO's outside of the Continental United States. These parcels upon arrival at the port of entry are then transported to the city of address by surface transportation.

2. PAL (Parcel Air Lift): Parcels not exceeding 30 pounds in weight or 60 inches in length and girth combined mailed at or addressed to an overseas military post office will be transported by air on a space available basis, upon payment of a fee of \$1.00 in addition to the regular surface rate of postage.

CUSTOMS REQUIREMENTS

1. All parcels and letter mail containing merchandise are subject to customs duty upon entry into the United States. Parcels and letters containing merchandise must be accompanied by a Customs Declaration Form, POD Form 2966 (Customs declaration (Parcel Post)) or POD Form 2976 (Customs declaration to open International Mail) as appropriate. Customs Declaration Forms must be legibly completed in handwriting or typewritten. They will be completed to show name and address of sender and addressee (applicable to POD Form 2966), disposition to be made of parcel if undeliverable as addressed, and a complete and accurate description of contents. The description of the contents must be stated such as, silk stockings, fur coat, or leather jacket. Worn clothing, groceries, presents, merchandise is not sufficient for listing on customs forms.

2. Bona Fide Gifts not exceeding \$10.00: Military personnel may mail bona fide gifts not exceeding \$10.00 in value free of duty. Items sent normally by military personnel as bona fide gifts are appraised by Customs at the fair retail value in the country of export.

3. Bona Fide Gifts not exceeding \$50.00:

a. Military personnel serving in Vietnam may mail bona fide gifts free of duty on the first \$50.00 of the retail value in the country of mailing to donees in the customs territory of the United States.

b. Cigarettes are not exempt from payment of duty.

c. To qualify under the \$50.00 exemption the article must have been purchased in or through authorized agencies of the Armed Forces. Articles purchased through other sources are not entitled to duty exemption.

APPENDIXES:

APPENDIX I - Sample Mail

SFC I. M. Short  
234-56-7896  
HHC, 124th Trans Comd (S-1)  
APO SF 96312

*FREE*

Stateside Free Mail

Mrs. I. M. Short  
69 Moffett Road  
Lynn, Mass.  
96312

(SAMPLE A)

SP4 I. C. Moore  
786-45-9876  
HHC, 124th Trans Comd (S-2)  
APO 96312

*IN COUNTRY*

APO In-Country Mail

SGT Billy Carter  
345-76-3456  
Btry B 8th Bn 6th Arty  
APO 96345

(SAMPLE C)

CPT George W. Wood  
987-23-3498  
HHC, 124th Trans Comd (S-3)  
APO SF 96312

Miss Sally Gruber  
10 Nichtstrasse  
Bitburg, Germany

International Mail

(SAMPLE B)

## R&R - OPPORTUNITY OF A LIFETIME

R&R is a rare and valuable opportunity. The R&R Program offers an individual the chance to travel at government expense to some of the most interesting and exciting international capitals in the world, an opportunity many individuals may never have again. Yet, not enough servicemen are taking advantage of their Rest and Recuperation opportunities. One reason may be a lack of knowledge or understanding of the R&R Program on the part of the individual service man. The facts are really very simple.

Every serviceman in Vietnam is authorized one R&R and one seven day out-of-country leave during a one year tour of duty. The seven days allotted for an R&R leave is an average. The actual number of days granted is based upon the travel time to and from the particular site selected. Duration of out-of-country R&R will be: a. Hawaii and Australia 7 days. b. all others is 6 days. R&R can also be granted to Okinawa and Guam, provided that the individual making the request has immediate family in Okinawa or Guam or is of Guamanian descent and the request is submitted at least 60 days in advance of his intended R&R.

To be eligible for an R&R, an individual must have a minimum of three months in country. An application for R&R may be submitted earlier provided the dates requested are after the initial three months in country. Requests should be submitted NLT the 1st day of the month preceding the desired R&R month. (i.e., if the desired R&R month is March, the request should be submitted NLT 1 Feb.) Normally, R&R orders are processed and published by the 10th of the month preceding the month of requested R&R, e.g., and individual would receive R&R orders for February in January.

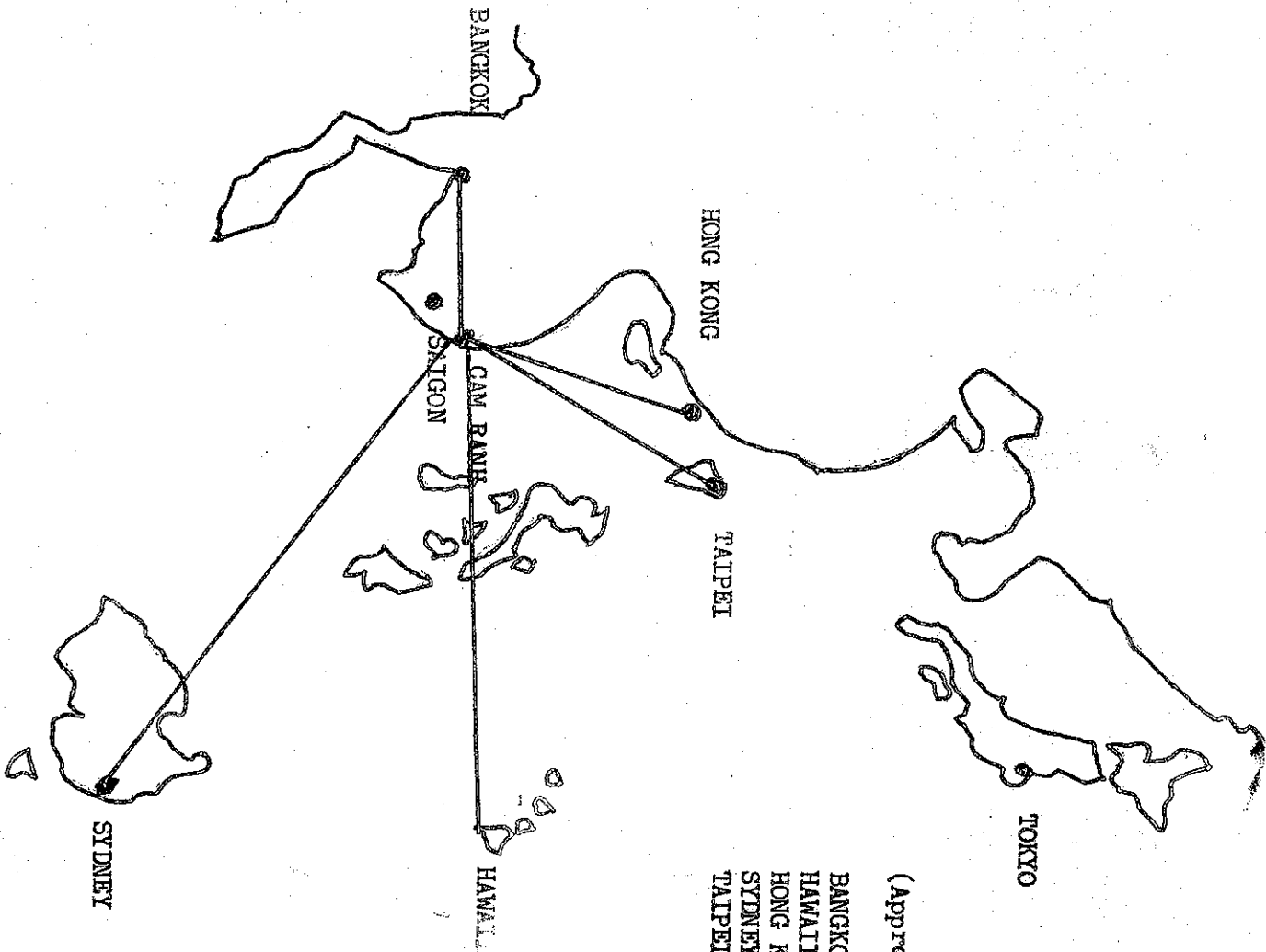
Priority for dates and locations is determined by the amount of time in country. There are no grade or rank privileges, as eligibility for R&R is based strictly on time in country. Generally, five or six months is enough time to guarantee an R&R during the month requested for all sites except for Hawaii, Sydney, and Bangkok, which often require 7 - 8 months in country. For your own convenience in coordinating travel plans, please refrain from making positive reservations for Hawaii until R&R orders are received for a definite date.

Once an individual has received his R&R orders, he must insure the following is completed prior to the check-in time for his R&R flight. The R&R participant must possess a valid ID card, MACV Form 333 (Ration Card) MACV Form 5 card (Currency Control Plate), identification tags, and an up-to-date and validated immunization record. Before departing from the Republic of Vietnam to all R&R sites, R&R personnel must have had a smallpox vaccination within the last year, plague within the past six months, and cholera within six months but not later than six days prior to departure on R&R. Civilian clothing is authorized for optional wear by all personnel traveling on R&R aircraft (including leave) destined for all R&R sites. Appropriate Class "A" uniform can be worn by military personnel aboard R&R aircraft.

When going on R&R, an individual must have in his possession a minimum of \$250. However, the processing center OIC may waive this minimum if the individual is meeting a dependent and has certification that the amount of negotiables he and his dependent jointly possess meets the \$250. requirement. Also, a \$500 limit applies to the conversion of MPC to US currency for R&R personnel. However, if more than \$500 is to be converted, a valid commander's supervisor's certificate as to the legitimacy of the acquisition of the MPC is required.

Everything has been done to minimize delay and make the procedure as smooth and uncomplicated as possible. The first step is to decide where you would like to take your R&R. Then, submit a request on DA Form 2496 through appropriate channels. Booklets, circulars and pamphlets concerning the benefits and opportunities at each particular site are available at the R&R office. Feel free to visit your R&R office at any time in planning your R&R, the opportunity of a lifetime.

OUT OF COUNTRY  
R & R CENTERS



DISTANCES FROM CAM RANH

(Approx nautical miles & Flt times)

BANGKOK	561	1:05
HAWAII	5453	11:10
HONG KONG	684	1:35
SYDNEY	3795	8:00
TAIPEI	1168	2:40

